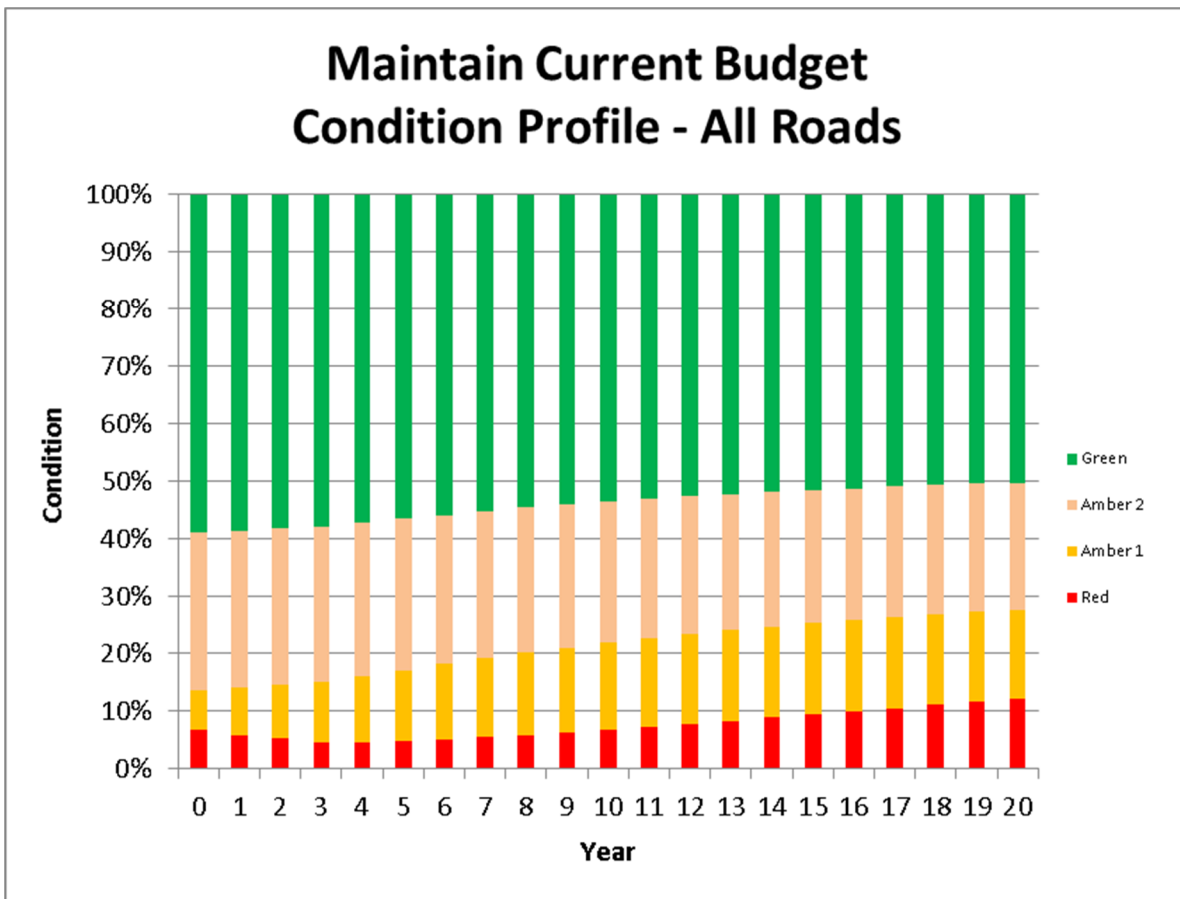


Appendix 1

Overall financial spend for 2016 /2017 on carriageways

	Cost Category	£5,073.6k	Output
Capital	Planned Maintenance – Preventative	£1,028.7k	Surface Dressing
	Planned Maintenance - Corrective	£1,284.8k	Patching / Small Scale works
Revenue	Planned Maintenance - Corrective	£519.4k	Including:- <ul style="list-style-type: none"> • £174k jet patching • £96k patching (planned)
	Routine Cyclic Maintenance	£755.0k	Including:- <ul style="list-style-type: none"> • £281k gully emptying • £223k h'way sweeping • £137k grass cutting • £70k siding
	Routine – Reactive Repairs (emergency)	£36.9k	<ul style="list-style-type: none"> • Storm damage
	Routine – Reactive Repairs (non-emergency)	£565.2k	Including:- <ul style="list-style-type: none"> • £298k pot hole repairs • £82k drainage works • £61k ditch clearance • £37k trees
	Routine – Inspection & Survey	£40.0k	<ul style="list-style-type: none"> • Inc. SCANNER/SCRIM
	Operating Costs	£833.7k	<ul style="list-style-type: none"> • Winter Maintenance
	Loss	£9.9k	<ul style="list-style-type: none"> • Damage - Persons Unknown

This graph indicates the likely change in road condition over the next twenty years based on the current levels of investment. Whilst initially the percentage of roads in red ('poor') decreases this is offset by the increase in percentage of roads in the Amber 1 category. In other words we are storing up a problem and the volume of reactive, less cost effective, maintenance will increase significantly so as to fulfil our Statutory Duty.



Highway Capital programme

Wellbeing Impact Assessment Report

This report summarises the likely impact of a proposal on the social, economic, environmental and cultural well-being of Denbighshire, Wales and the world.

Assessment Number:	90
Brief description:	Provision of highway maintenance
Date Completed:	27/10/2016 14:40:04 Version: 1
Completed by:	Tim Towers
Responsible Service:	Highways & Environmental Services
Localities affected by the proposal:	Whole County,

IMPACT ASSESSMENT SUMMARY AND CONCLUSION

Before we look in detail at the contribution and impact of the proposal, it is important to consider how the proposal is applying the sustainable development principle. This means that we must act "in a manner which seeks to ensure that the needs of the present are met without compromising the ability of future generations to meet their own needs."

Score for the sustainability of the approach

Could you do more to make your approach more sustainable?

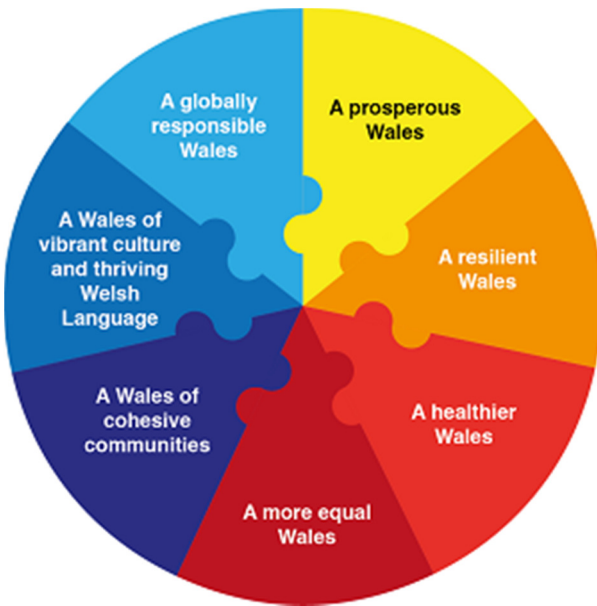


(2 out of 4 stars)

Actual score : 16 / 24.

Summary of impact

Wellbeing Goals



A prosperous Denbighshire	Positive
A resilient Denbighshire	Negative
A healthier Denbighshire	Positive
A more equal Denbighshire	Positive
A Denbighshire of cohesive communities	Neutral
A Denbighshire of vibrant culture and thriving Welsh language	Neutral
A globally responsible Denbighshire	Positive

Main conclusions

This proposal is basically offering a like for like outcome and therefore wouldn't be expected to add significantly to the aims of the Wellbeing and Future Generations Act however it will also have very little negative effect too

THE LIKELY IMPACT ON DENBIGHSHIRE, WALES AND THE WORLD

A prosperous Denbighshire

Overall Impact	Positive
Justification for impact	A good road network is vital to so many areas of everyday life

Positive consequences identified:

A good quality road network has been proven to boost economic benefit
A good local economy can create quality long term jobs
A good local economy can create quality long term jobs
The whole purpose of the project is to boost this

Unintended negative consequences identified:

Better roads could make driving more desirable

Mitigating actions:

Other initiatives can be used to assist with walking / cycling

A resilient Denbighshire

Overall Impact	Negative
Justification for impact	By its very nature the processes and end result of this work tend to be detrimental to the environment

Positive consequences identified:

As part of the normal maintenance we tend to clean and upgrade drainage systems thus reducing risk

Unintended negative consequences identified:

Highway maintenance produces often hazardous waste
The proposal is likely to sustain energy levels and may even increase them

Mitigating actions:

Where possible we will overlay existing roads or recycle material to reduce waste

A healthier Denbighshire

Overall Impact	Positive
Justification for impact	A good quality network encourages people to get out more and provides for a safer environment

Positive consequences identified:

This proposal would certainly provide a safer environment
A good quality network encourages cycling and walking due to a reduction in hazards such as potholes
A good network aids movement

Unintended negative consequences identified:

Mitigating actions:

A more equal Denbighshire

Overall Impact Positive

Justification for impact A good quality road and footway network with adequate dropped kerbs creates a better environment for all

Positive consequences identified:

A good quality road and footway network with adequate dropped kerbs creates a better environment for all

A good quality road and footway network with adequate dropped kerbs creates a better environment for all

Unintended negative consequences identified:

Mitigating actions:

A Denbighshire of cohesive communities

Overall Impact Neutral

Justification for impact Users and residents tend to take a good quality road for granted but don't like poor ones

Positive consequences identified:

Good quality roads and footways are easier to clean and are aesthetically pleasing

Unintended negative consequences identified:

Mitigating actions:

A Denbighshire of vibrant culture and thriving Welsh language

Overall Impact Neutral

Justification for impact

Positive consequences identified:

Unintended negative consequences identified:

Mitigating actions:

A globally responsible Denbighshire

Overall Impact Positive

Justification for impact

Positive consequences identified:

The road network contributes to many service provision aims

Unintended negative consequences identified:

Mitigating actions:

